

Introducing the ultimate solution for detecting hydrocarbon gas leaks:

MFE OGI Handheld Camera

The Quad - O compliant MFE OGI Camera features Sierra Olympic's industry-leading, mid-wave infrared Ventus OGI camera core and is designed to detect and visualize hydrocarbon gases, including methane and propane. Operators can take the camera right to the source to determine the size, movement, and direction of the gas leak in order to quickly get people out of harm's way and repair the leak.

A suite of advanced image processing functions, including automatic gain and dynamic contrast control, delivers visual acuity to operators for efficient leak detection and remediation. The camera features Shutter and Scene-based Non-Uniformity Correction (NUC) resulting in more accurate correction, especially for complex or rapidly changing temperature profiles. The MFE OGI Camera is an invaluable tool that saves time and money, increases efficiency, limits product loss, protects lives and reduces harm to the environment.

- **DETECT METHANE LEAKS IN REAL TIME**
- **CARRY BY HAND FOR FURTHER DIAGNOSIS**
- **DIGITAL NOISE REDUCTION**
- **ACHIEVE MORE ACCURATE RESULTS WITH SHUTTER & SCENE-BASED NUC**
- **HIGH 640 X 512 RESOLUTION**



MFE OGI Camera



Other OGI Camera





Unleash the power of mobility for gas leak detection with the
MFE OGI Camera and Boston Dynamics Spot

DETECT METHANE LEAKS IN REAL TIME

CARRY THE MFE OGI CAMERA BY HAND FOR FURTHER DIAGNOSIS

SEAMLESS INTEGRATION, UNPARALLELED GAS LEAK DETECTION

Introducing the ultimate solution for detecting hydrocarbon gas leaks: the MFE OGI Camera and Boston Dynamics' Spot.

The Quad - O compliant MFE OGI Camera features Sierra Olympic's industry-leading, mid-wave infrared Ventus OGI camera core and is designed to detect and visualize hydrocarbon gases, including methane and propane.

When mounted on Boston Dynamics' Spot, operators may rely on Spot's unprecedented mobility to automate routine inspection tasks. When further inspection is required, the MFE OGI Camera can be used as a handheld device for precise, close-up detection.

A suite of advanced image processing functions, including automatic gain and dynamic contrast control, delivers visual acuity to operators for efficient leak detection and remediation.

Whether used as a handheld device or mounted on Spot, the MFE OGI Camera is an invaluable tool that saves time and money, increases efficiency, limits product loss, protects lives and reduces harm to the environment.



FOCAL PLANE ARRAY:

Resolution	640 x 512
Sensor	HOT MWIR
Pitch	15µm
Wavelength	3.2 - 3.42 µm
Framerate	30Hz

OPTICS, SIZE, AND WEIGHT:

Focal Length	25mm
HFOV	21.7°
F#	1.5
Weight (without handles)	2.2 lb
Dimensions (LxWxH) (approx)	7"x3"x4"
Digital Zoom	8x



ENVIRONMENTAL:

Operating Temperature Range	-35 to +65C
Shock	Operating: 15G / Non-operating: 40G
Mounting	¼-20 Tripod Mount, M4 Tapped Holes
Certification	OOOOa Certified (<= 60 g/hr)

DETECTABLE GASES:

Acetic Acid, Ammonia, Benzene, Butadiene, Butane, Ethane, Ethylbenzene, Ethylene, Heptane, Hexane, Isoprene, Methyl Ethyl Ketone (MEK), Methane, Methanol, MIBK, Octane, 1-Pentane, Propane, Propylene, Sulphur Dioxide, Toluene, Vinyl Chloride and Xylene.

ADDITIONAL FEATURES

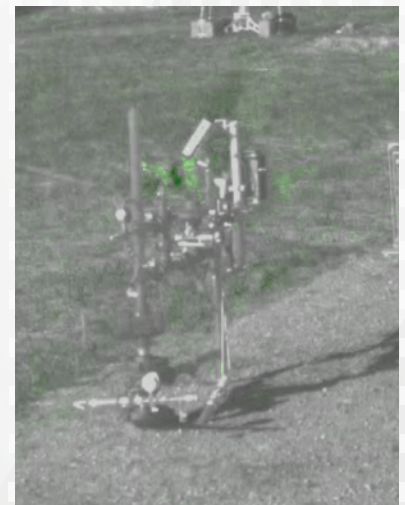
- + OGI Optimized Lens
- + Shutter/Scene-based NUC
- + Automatic/Manual Gain Control
- + Adaptive Contrast Control (CLAHE)
- + Temporal De-Noise
- + Electronic Image Stabilization
- + Multiple color palettes / LUT
- + Picoblade and FFC hardware interfaces
- + Simultaneous analog/digital output
- + 32GB of Onboard Video Sequence / Still Image Storage

EXPORT CLASSIFICATION

ECCN 6A003.b.4.a. Products require a license for export. EU/NATO countries, Australia, S. Korea, Japan, New Zealand, Argentina, and India are eligible for STA license exemption. Customer and end-use documentation required. Re-export is controlled under STA rules.

APPLICATIONS:

- + Systems integrators
- + Pipe racks
- + Gathering and Transmission lines
- + Above and below ground gas pipelines
- + Fuel Gas Line
- + Valves
- + Flanges
- + Connections
- + Seals
- + Vent stacks
- + Compressors
- + Storage Tanks
- and more...



Small Rig Mini V-Mount Battery For Handheld Use

*COMPACT AND LIGHTWEIGHT TO BE CARRIED AROUND
INTELLIGENT BMS CHIP FOR EFFICIENT AND SAFE USE
PRACTICAL OLED DISPLAY FOR PRECISE CONTROL*

Run Time	About 4 Hours
Charge Time	Less than 1 hour w/D-Tap Charger
Material	Fireproof PC
Capacity	14.8V, 3.4Ah, 50Wh
Rated Power	Discharge: 50W Charge: 45W
# of Batteries Included	3



RGB Camera Specifications

Sensor	8MP 1/4" IMX219
Resolution	8MP 3264H x 2448V
Data Format	MJPG/YUY2
Field of View (FOV)	H=62.2°, V=48.8°
IR Sensitivity	Integral IR filter, 650nm IR Filter, visible light only
Frame Rate	MJPG 3264x2448/2592x1944@15fps, 1920x1080/1600x1200/1280x720/800x600/640x480@30fps, YUY2 1280x720/800x600/640x480/320x240@10fps
Adjustable Features	Brightness, Contrast, Saturation, Sharpness, Gamma, White balance
Power Supply	USB Powered 5V
Working Current	MAX 200mA
Operating Temp.	-4°F167°F (-20°C+75°C)
Dimension	38mmx38mm
USB Connector	B4B-ZR(LF)(SN)
Focusing Range	200mm to infinity

Gas Enhancement Mode Colorizes Leaks

The Sierra Olympic Ventus OGI's GEM (Gas Enhancement Mode) functionality. The optional imaging mode colorizes gas plumes to make them even more visible to the eye during leak detection operations.

